

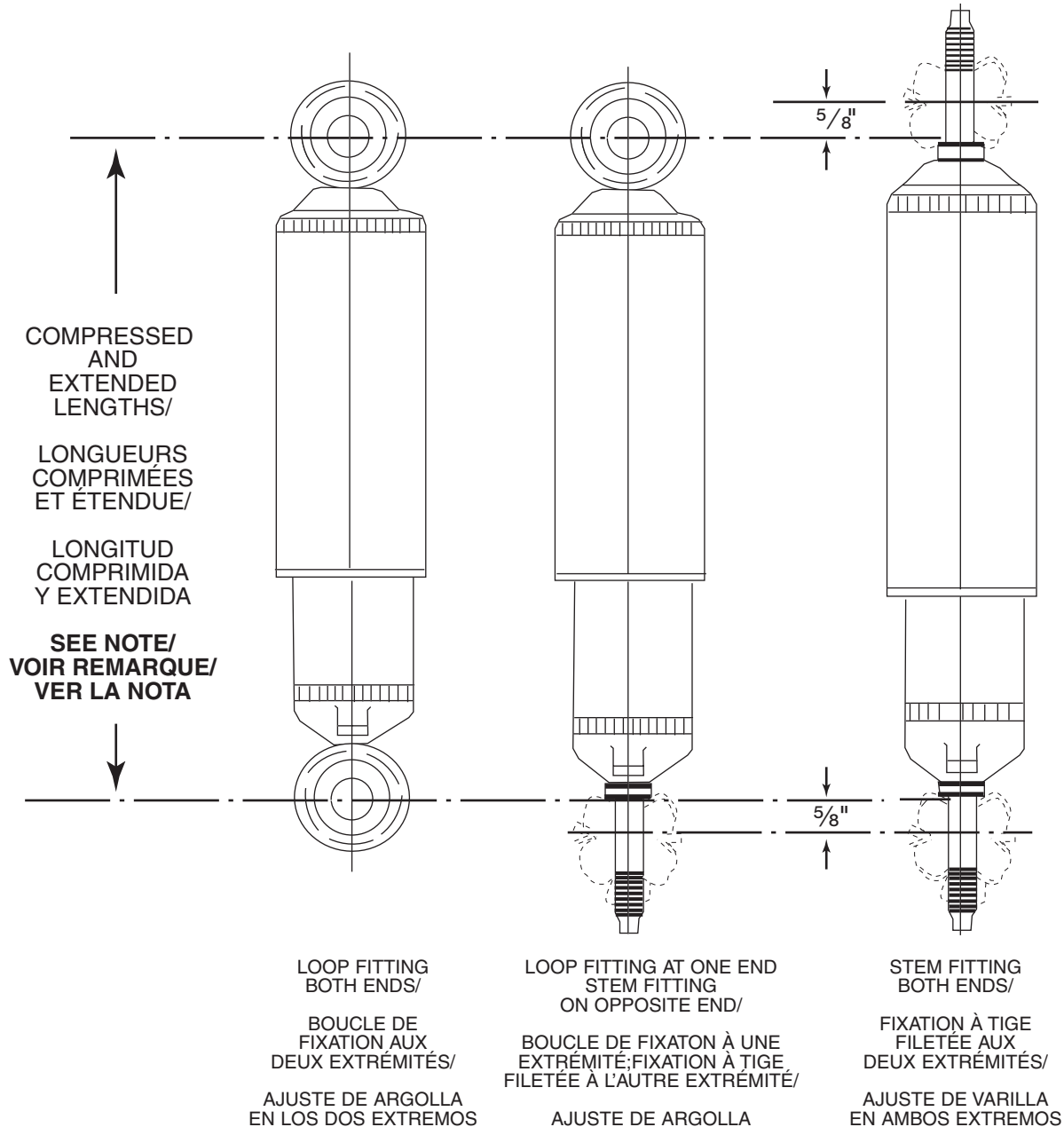
# MOUNTING & LENGTH CHARTS—AIR SHOCKS

PART NO.	MOUNTING		LENGTHS			UNIT L/R	PARTS PACK	PART NO.	MOUNTING		LENGTHS			UNIT L/R	PARTS PACK
	Upper	Lower	Comp.	Ext.	Trav.				Upper	Lower	Comp.	Ext.	Trav.		
<b>MAX-AIR® SHOCKS</b>								<b>MAX-AIR® SHOCKS — Continued</b>							
MA700	S4	L1/CP3	12.750†	21.375	8.625	None	P576 P1134	MA774	L3	LS43	13.500†	21.250†	7.750	None	P867
MA702	XP7	L1/CP4	12.625†	20.750	8.125	None	P72	MA775	L1	LS26	15.500†	25.750†	10.250	None	None
MA704	L2	L2	13.125†	21.250	8.125	None	P76	MA776	XP7	LS26	15.000	24.375†	9.375	L/R	P941
MA705	S4	S4	10.875†	17.375†	6.500	None	Two P1134	MA777	S4	LS26	12.500†	20.500	8.000	None	P1135
MA706	XP7	LS14	13.000†	21.375	8.375	None	P414	MA778	XP5	LS47	13.875†	22.875†	9.000	None	None
MA708	XP7	S4	12.250†	19.875†	7.625	None	P1137	MA779	XP7	LS47	14.500†	23.750†	9.250	None	None
MA709	CP1	S4	10.750†	17.375	6.625	None	P459 P1135	MA780	XP7	LS16	13.375†	21.500	8.125	L/R	None
MA711	S4	LS14	11.875†	19.625	7.750	None	P1134	MA784	LS7	LS7	13.375†	21.500†	8.125	L/R	None
MA717	XP7	L1/CP3	12.750†	20.875	8.125	L/R	P576	MA785	LS14	LS53	9.500†	14.000†	4.500	L/R	P437
MA719	XP7	L1/CP3	14.500†	23.750	9.250	None	P576	MA789	XP7	L1/CP1	12.750†	20.500	7.750	None	P577
MA726	S4	LS38	12.250†	19.750	7.500	None	P1134	MA791	LS83	LS28	15.125†	22.375†	7.250	L/R	None
MA727	L1	L1	12.750†	20.375	7.625	None	P573	MA792	L1	L1	13.000†	21.250	8.250	None	None
MA728	L1/CP5	L1/CP3	14.250†	23.375	9.125	None	P572 P576	MA793	S4	LS26	14.250†	23.750†	9.500	None	P1136
MA730	L1	LS38	12.875†	21.000	8.125	None	None	MA802	L1	S4	11.375	18.125†	6.750	None	P1137
MA733	LS39	L2	15.500†	26.250	10.750	None	None	MA803	LS23	LS30	10.500	16.125†	5.625	L/R	None
MA739	S4	S4	12.375†	20.875	8.500	None	Two P1137	MA805	S4	L1/CP4	12.750†	19.500	6.750	None	P72 P1134
MA743	L1/CP5	LS47	14.000†	23.000	9.000	None	P19	MA809	S4	LS7	14.250†	21.500	7.250	L/R	P1278
MA746	LS38	LS39	13.125†	21.000	7.875	None	P185	MA810	S4	L1/CP3	12.375†	20.500	8.125	None	P576 P1136
MA750	LS39	S4	11.625†	18.875	7.250	None	P1134	MA811	S4	LS4	13.625†	22.250	8.625	None	P1134
MA751	XP7	L1/CP3	13.000†	20.625	7.625	L/R	P576	MA812	L1	L1	12.750†	20.750	8.000	None	None
MA756	S4	LS17	10.250†	16.375	6.125	None	P1135	MA813	LS7	LS7	14.125†	22.875†	8.750	None	None
MA757	LS39	L2	13.875†	22.500	8.625	None	None	MA814	LS32	LS32	12.000†	18.375†	6.375	None	None
MA758	LS74	LS74	14.125†	23.000	8.875	None	None	MA815	S4	L1/CP3	12.250†	19.875†	7.625	None	P576 P1136
MA759	XP7	LS47	14.625†	24.000†	9.375	None	None	MA816	XP8	LS39	13.875†	22.750	8.875	None	None
MA762	XP7	L1/CP4	12.625†	20.625	8.000	None	P72	MA817	LS40	LS40	12.750†	20.875	8.125	None	P185 P188
MA763	S4	XP5	12.125†	20.125	8.000	None	P941 P1136	MA818	L3	LS43	14.875†	23.625†	8.750	None	P867
MA764	XP7	LS47	15.875†	27.125	11.250	None	None	MA819	XP7	L1/CP3	13.375†	21.250†	7.875	L/R	P576
MA765	XP12	L1/CP4	12.875†	20.500†	7.625	None	P72	MA820	L1	L1	14.375†	23.000	8.625	None	None
MA768	LS28	LS26	12.000†	18.500	6.500	None	None	MA821	XP8	LS39	15.250†	26.125	10.875	None	None
MA769	L1	LS26	14.125†	22.875†	8.750	None	P827	MA822	S1	XP7	14.500†	24.375†	9.875	None	P1243
MA770	L1	LS26	15.875†	26.375†	10.500	None	P827	MA824	LS26	LS26	12.750†	20.125†	7.375	None	None
MA771	L1	LS26	14.125†	22.875†	8.750	None	None	MA825	S1	SPEC	15.000	25.750	10.750	None	17110297
MA772	L1	LS26	15.000†	24.750†	9.750	None	None	MA826	LS12	LS42	11.000	16.000	5.000	None	None
MA773	L1	LS26	13.500†	21.750†	8.250	None	None								

† Bumper Stop Unit. Dimension shown at Bumper Contact.

‡ Hydraulic Lockout Unit. Dimension shown at Lockout Contact.

# SHOCK ABSORBER LENGTH DIMENSIONING LONGUEUR DES AMORTISSEURS LONGITUD DE LOS AMORTIGUADORES



**Special Construction** - Construction not the same as standard shock mounts listed.

**NOTE:** Compressed and extended lengths listed in the following pages of this book are taken from the center of loops and/or from the stem shoulders.

When measuring from the brackets on a vehicle, subtract 5/8" for each stem end.

See illustrations above.

**Fabrication spéciale** - La fabrication des fixations est différente de celle des amortisseurs standard.

**REMARQUE:** Les longueurs en compression et en extension indiquées dans les pages suivantes sont mesurées entre les épaulements des tiges filetées et/ou le centre des boucles. Lors de la mesure à partir des ferrures, soustraire 5/8" pour chaque tige filetée. Voir les illustrations.

**Fabricación especial** - La fabricación es diferente a la de las series de los amortiguadores listadas.

**NOTA:** Las longitudes comprimida y extendida listadas en las páginas siguientes de este libro, son tomadas desde el centro de las argollas y/o desde los resaltes de la varilla.

Cuando se mide desde los ajustes, en un vehículo quite 5/8" por cada extremo de varilla.

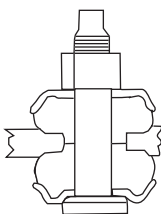
Ver ilustración arriba.

### CONVERSION CHART/ TABLEAU DE CONVERSION/ TABLA DE CONVERSIÓN

Fraction/ Fractionnaire Fracción (Inches/pouces/pulgadas)	Decimal/ Décimale Decimal
1/8	.12
1/4	.25
3/8	.37
1/2	.50
5/8	.62
3/4	.75
7/8	.87
1	1.00

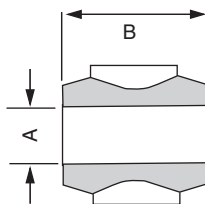
# MOUNTING CODES

## STEM



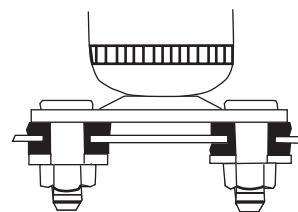
CODE	THREAD
S1	M10
S2	M12
S3	3/8 - 24
S4	3/8 - 16
S5	1/2 - 13
S6	5/8 - 11

## LOOP MOUNTING



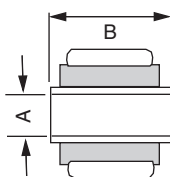
CODE	A	B
L1	5/8	1 5/16
L2	1 1/16	1 9/16
L3	3/4	1 9/16
L4	1	1 3/4
L5	1 1/4	2 9/16

## STUD PLATE



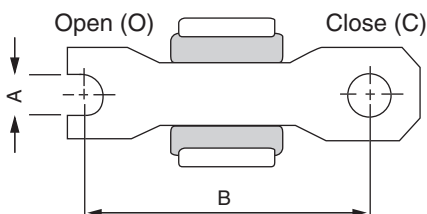
CODE SP

## BUSHING & SLEEVE



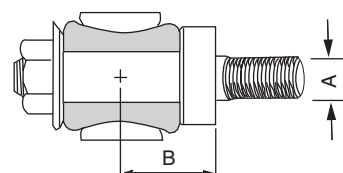
CODE	A	B	CODE	A	B	CODE	A	B	CODE	A	B
LS1	10MM	1 5/16	LS23	12MM	1 1/4	LS45	14MM	2 7/16	LS67	3/4	1 11/16
LS2	10MM	1	LS24	12MM	1 3/8	LS46	14MM	3 1/8	LS68	3/4	1 7/8
LS3	10MM	1 1/4	LS25	12MM	1 7/16	LS47	9/16	1 5/8	LS69	3/4	1 15/16
LS4	10MM	1 3/8	LS26	12MM	1 1/2	LS48	9/16	2 7/16	LS70	3/4	2 1/4
LS5	10MM	1 7/16	LS27	12MM	1 9/16	LS49	5/8/16MM	1 3/16	LS71	3/4	2 3/4
LS6	10MM	1 9/16	LS28	12MM	1 5/8	LS50	5/8/16MM	1 1/2	LS72	7/16	2
LS7	10MM	1 5/8	LS29	12MM	1 3/4	LS51	5/8/16MM	1 9/16	LS73	7/16	2 1/2
LS8	10MM	2	LS30	12MM	1 7/8	LS52	5/8/16MM	1 11/16	LS74	12MM	1 11/16
LS9	10MM	2 1/8	LS31	12MM	2	LS53	5/8/16MM	2	LS75	20MM	1 3/4
LS10	10MM	2 3/8	LS32	12MM	2 1/8	LS54	3/4	1 3/4	LS76	1/2	2 3/8
LS11	10MM	3	LS33	12MM	2 5/16	LS55	18MM	1 5/8	LS77	1/2	2 7/16
LS12	7/16	1 1/4	LS34	12MM	2 7/8	LS56	20MM	1 9/16	LS78	9/16	1 1/2
LS13	7/16	1 5/16	LS35	1/2	1 1/4	LS57	20MM	2	LS79	5/8/16MM	1 3/8
LS14	7/16	1 3/8	LS36	1/2	1 5/16	LS58	20MM	2 7/16	LS80	5/8/16MM	1 3/4
LS15	7/16	1 7/16	LS37	1/2	1 3/8	LS59	3/4	3 13/16	LS81	5/8/16MM	1 7/8
LS16	7/16	1 5/8	LS38	1/2	1 1/2	LS60	3/4	3 3/16	LS82	5/8/16MM	1 1/2
LS17	7/16	1 7/8	LS39	1/2	1 5/8	LS61	5/8/16MM	4	LS83	18MM	2
LS18	7/16	2 1/8	LS40	1/2	1 11/16	LS62	5/8/16MM	2 9/16	LS84	12MM	2 3/8
LS19	7/16	3 3/16	LS41	1/2	2 1/4	LS63	1/2	1 1/2	LS85	5/8/16MM	1 3/16
LS20	7/16	3 3/8	LS42	14MM	1 5/16	LS64	21MM	1 15/16	LS86	3/4	2 5/16
LS21	12MM	1	LS43	14MM	1 9/16	LS65	1	2			
LS22	12MM	1 1/8	LS44	14MM	1 7/8	LS66	3/4	1 3/8			

## CROSS PIN MOUNTING



CODE	END	A	B	CODE	END	A	B
XP1	O	5/16	2 3/16	XP8	O	5/16	3
XP2	O	5/16	2 3/8	XP9	O	5/16	3 5/8
XP3	O	5/16	2 7/16	XP10	O	3/8	2 5/8
XP4	C	5/16	2 7/16	XP11	C	3/8	2 3/4
XP5	C	5/16	2 1/2	XP12	O	3/8	3 3/16
XP6	O	5/16	2 3/4	XP13	C	12MM	2 15/16
XP7	C	5/16	2 7/8				

## CANTILEVER PIN MOUNTING



CODE	A	B
CP1	1/2	1 1/16
CP2	1/2	1 3/16
CP3	1/2	1 5/16
CP4	1/2	1 1/2
CP5	5/8	1 5/16