



Installation Instructions

Thank you for purchasing this anti-sway bar kit. Please read through these instructions before installation.

Front Anti-Sway Bar Kit for International MV Refresh Series

part #1179-132
1³/₄" diameter



INTRODUCTION

Thank you for purchasing this anti-sway bar kit. This kit is designed to improve the handling characteristics of your vehicle by reducing the body roll and balancing the weight transfer during cornering. The anti-sway bar kit is engineered for long life and trouble-free performance.

All the hardware needed for installation is included in this kit. Refer to the PARTS LIST in these instructions to identify the parts.

SUGGESTED TOOLS

The following tools are suggested to complete the installation procedures:

- Standard and metric hand tools
- Jack stands (2)

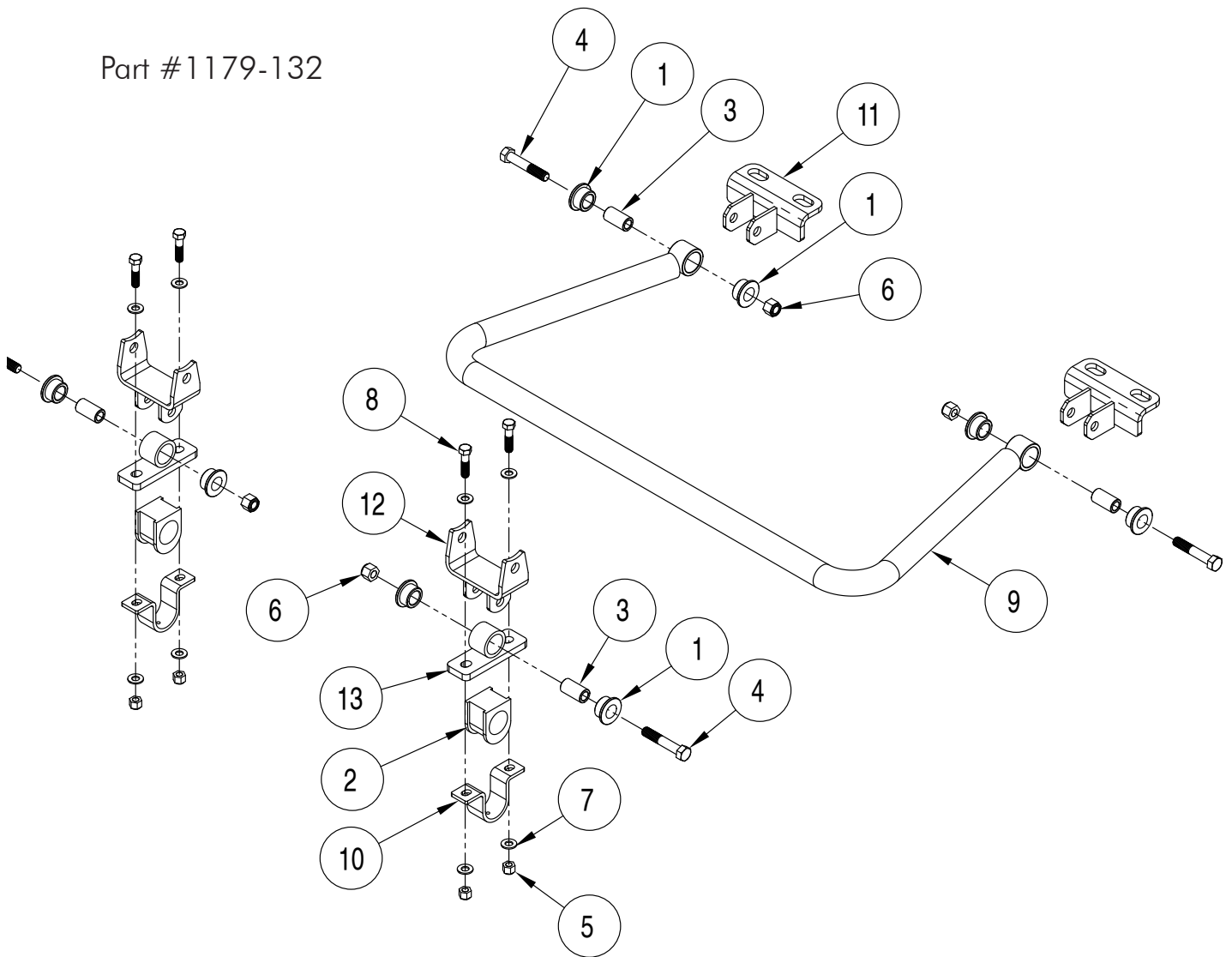
WARNING

Failure to follow these instructions can result in property damage, personal injury or even death.

- If raising the vehicle to install the anti-sway bar, always support the vehicle with jack stands at both frame rails or at the rear axle before working underneath. Ensure that the jack stands are securely positioned, and are rated at or above the weight of the vehicle.
- The installer must read the instructions and use all bolts and parts supplied. Use only the parts supplied by ROADMASTER to install this kit.
- Minor modifications are sometimes necessary due to slight vehicle variations, even for the same year, make and model.
- Regardless of year, make and model, a wide range of options for specific applications may or may not interfere with the installation. It is the installer's responsibility to make certain that equipment is not damaged once the suspension solution travels through the full range of motion. Failure to ensure adequate clearance could result in non-warranty property damage, personal injury or even death.
- If running changes were made by the manufacturer after this kit was designed, there may be weldments, braces, gussets, or other structural items which interfere with the installation. It is the installer's responsibility to allow for these running changes without sacrificing the structural integrity of the anti-sway bar. Failure to securely fasten the anti-sway bar could result in property damage, personal injury or even death.
- ROADMASTER will not be responsible for any damage or injury resulting from any modification or alteration.
- Check ALL the fasteners for tightness before and after road testing the vehicle.
- Do not use this document for custom fabrication, as it may not show all parts or structural components.
- Do not use an air impact wrench when re-installing bolts, as stripped threads may result.
- This anti-sway bar is only warranted for the original installation. Installing a used anti-sway bar on another vehicle is not recommended and will void the warranty.

PARTS LIST

Part #1179-132



ITEM	QTY	DESCRIPTION	PART NUMBER
1	8	BUSHING	205209-00
2	2	BUSHING	205220-20
3	4	BUSHING SLEEVE	205503-00
4	4	5/8-11 x 3 1/2" BOLT - GRADE 8	350156-00
5	4	1/2-13 NYLON INSERT LOCK NUT	350259-00
6	4	5/8-11 NYLON INSERT LOCK NUT	350263-20
7	8	1/2" SAE WASHER	350308-20
8	4	1/2-13 x 2" BOLT - GRADE 8	350703-00
9	1	ANTI-SWAY BAR	580601-00
10	2	BUSHING CLAMP	B141
11	2	BRACKET	B500
12	2	BRACKET	B660
13	2	BRACKET	B661
14	1	AQUALUBE	400011-30

INSTALLATION

The following instructions must be followed in the order listed to ensure a proper installation and to preserve the ROADMASTER warranty.

***Installation should be done with the vehicle's suspension loaded.**

1. Remove the U bolt nuts on the driver's side.

Remove the U bolt nuts from the front side of the axle on the driver's side to install the B500 axle bracket. Using red Loctite, reinstall the factory ubolt nuts and tighten evenly. Torque to 250 lb-ft. *Hint: It may be necessary to clean the U bolt threads with a wire bush and/or use some penetrating oil to remove the nuts. Be sure not to get any over spray on the brake rotors.*

2. Repeat step 1 for the passenger's side.

3. Remove the passenger side forward leaf spring bolt.

On the passenger side, locate and remove the forward leaf spring mounting bolt. *Hint: After removing the nut for the leaf spring mounting bolt you will want to use the vehicle's leveling system to raise the vehicle and take pressure off the bolt.*

4. Install the passenger side frame bracket.

Install the frame bracket using the factory hardware removed in the previous step. Leave nut and bolt loose for now (Fig.1). *Hint: Use the vehicle's leveling system to align the hole so you can pass the bolt through. If the axle needs to be pulled forward to align the holes, use a heavy duty ratchet strap tied to the end of the frame behind the front bumper. If the leaf spring hanger plate 'winged out' after removing the bolt, a large C-clamp may be necessary to pinch the upper half of the hanger tabs so that the bracket can be installed.*

5. Install the driver's side frame bracket.

Repeat step 4 on the driver's side. It may be necessary to turn the steering wheel so that the pitman arm is out of the way.

6. Install the bushing brackets.

Install the B661 bushing brackets on both the passenger and driver's side using a 5/8" x 3-1/2" bolt and nut. Leave loose for now (Fig.2).

7. Install the axle brackets.

Install the ring ends of the sway bar to the B500 axle brackets using a 5/8" x 3-1/2" bolt and nut. Leave loose for now. Then, rotate the sway bar up to the B661 bushing brackets to determine the location for the bushings. Lubricate and install the bushings on to the sway bar at the approximate locations noted. Then, using the B141 bushing clamps and supplied 1/2" x 2" bolts, nuts and washers, rotate the sway bar up to the B661 bushing brackets and secure the sway bar with the B141 (Fig.3). Torque to 60 lb.-ft.

8. Secure the hardware.

Ensure the B755 and B660 are hanging straight down then secure

Figure 1

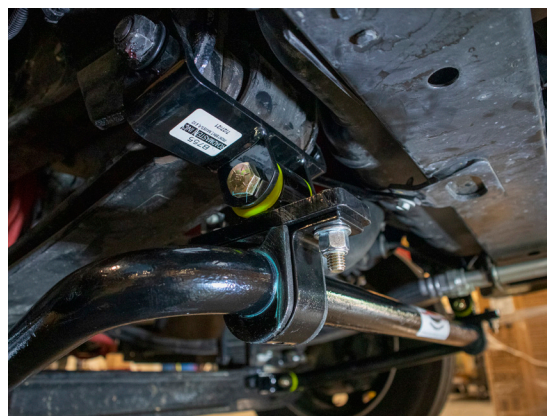


Figure 2

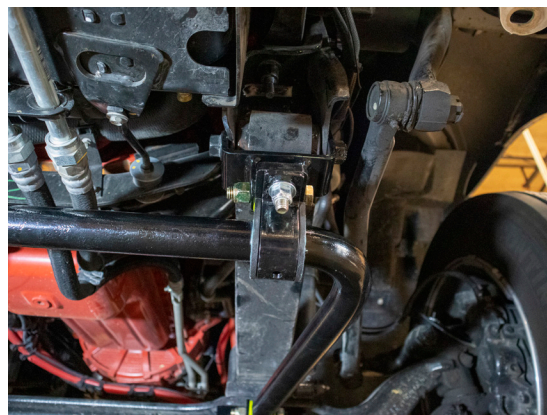


Figure 3



INSTALLATION

the factory leaf spring bolt to 400 lb.-ft. Secure all 5/8" hardware to 150 lb.-ft.

Figure 4

9. Test drive the vehicle.

Drive the vehicle and then carefully check all the fasteners for proper tightness. Figure 4 shows the completed installation.



WARNING

After road testing, re-check all fasteners for proper tightness — if a fastener has worked loose or fallen off, re-tighten or replace it. Without all kit components properly tightened or in place, the anti-sway bar will not stabilize the vehicle at full capacity, which may cause reduced cornering ability or other reductions in vehicle handling or performance.

Failure to follow these instructions may result in property damage, personal injury or even death.

WARNING

The anti-sway bar is not a load-bearing component

Do not tow or hoist the vehicle using the anti-sway bar or its mounting brackets as attachment points. The anti-sway bar is not designed to carry the weight of the vehicle and may collapse, which will damage the anti-sway bar components, the suspension, or other components. The vehicle will detach or fall, which may cause severe personal injury.

Failure to follow these instructions may result in property damage, personal injury or even death.