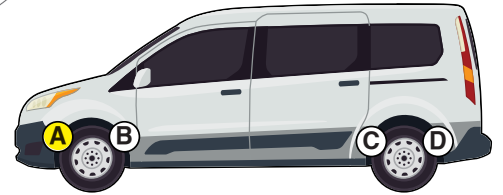




Thank you for purchasing this anti-sway bar kit. Please read through these instructions before installation.

# Installation Instructions



## Front Auxiliary Sway Bar and Skid Plate Combo Kit for Sprinter 2500

part #1209-148

1" diameter



## INTRODUCTION

Thank you for purchasing this anti-sway bar kit. This kit is designed to improve the handling characteristics of your vehicle by reducing the body roll and balancing the weight transfer during cornering. The anti-sway bar kit is engineered for long life and trouble-free performance.

All the hardware needed for installation is included in this kit. Refer to the PARTS LIST in these instructions to identify the parts.

## SUGGESTED TOOLS

The following tools are suggested to complete the installation procedures:

- General hand tools
- Torque wrench
- Ratchet strap, potentially
- Second person for assistance
- Red Loctite

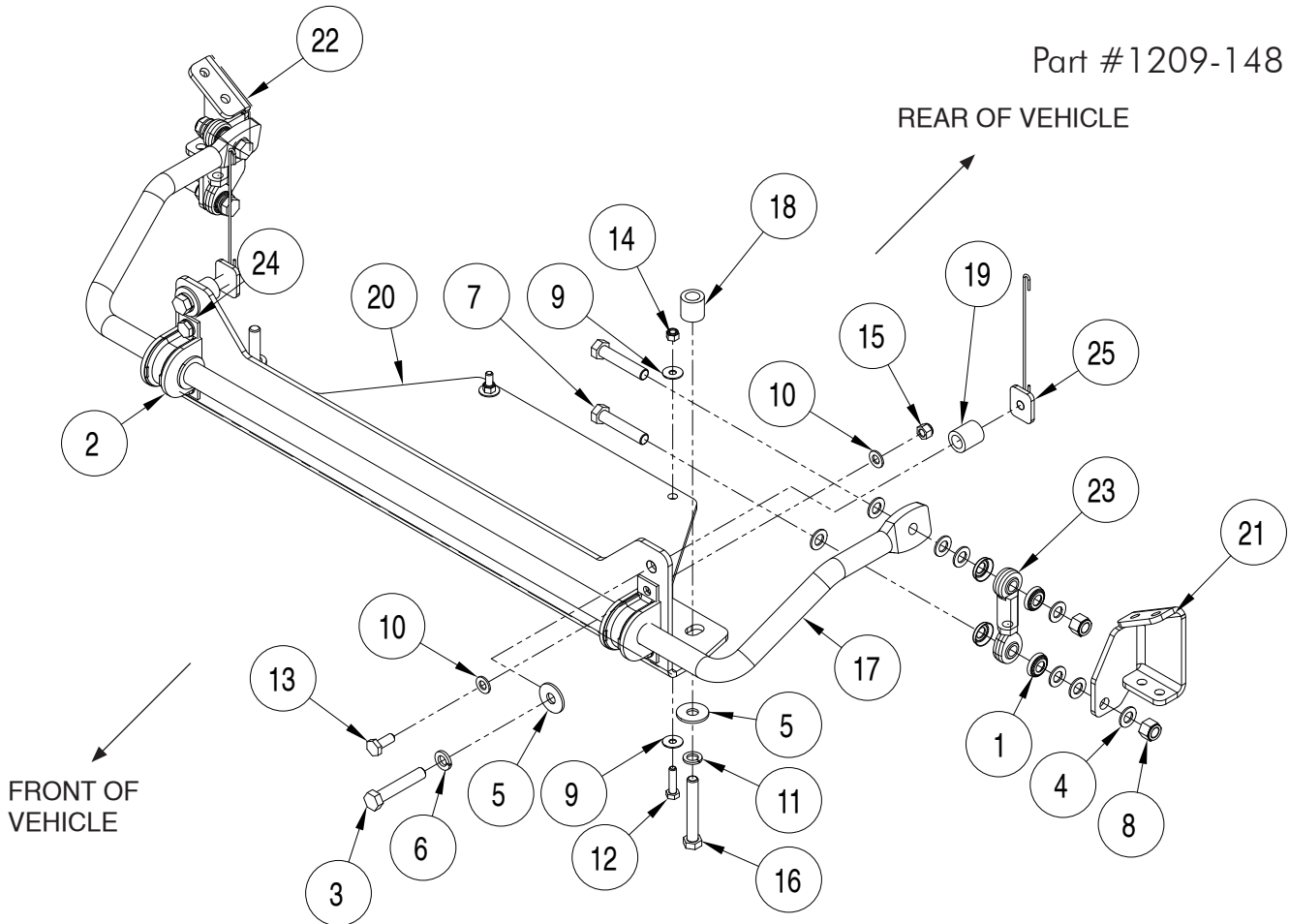
### WARNING

**Failure to follow these instructions can result in property damage, personal injury or even death.**

- If raising the vehicle to install the anti-sway bar, always support the vehicle with jack stands at both frame rails or at the rear axle before working underneath. Ensure that the jack stands are securely positioned, and are rated at or above the weight of the vehicle.
- The installer must read the instructions and use all bolts and parts supplied. Use only the parts supplied by ROADMASTER to install this kit.
- Minor modifications are sometimes necessary due to slight vehicle variations, even for the same year, make and model.
- Regardless of year, make and model, a wide range of options for specific applications may or may not interfere with the installation. It is the installer's responsibility to make certain that equipment is not damaged once the suspension solution travels through the full range of motion. Failure to ensure adequate clearance could result in non-warranty property damage, personal injury or even death.
- If running changes were made by the manufacturer after this kit was designed, there may be weldments, braces, gussets, or other structural items which interfere with the installation. It is the installer's responsibility to allow for these running changes without sacrificing the structural integrity of the anti-sway bar. Failure to securely fasten the anti-sway bar could result in property damage, personal injury or even death.
- ROADMASTER will not be responsible for any damage or injury resulting from any modification or alteration.
- Check ALL the fasteners for tightness before and after road testing the vehicle.
- Do not use this document for custom fabrication, as it may not show all parts or structural components.
- Do not use an air impact wrench when re-installing bolts, as stripped threads may result.
- This anti-sway bar is only warranted for the original installation. Installing a used anti-sway bar on another vehicle is not recommended and will void the warranty.

# PARTS LIST

Part #1209-148



ITEM	QTY	DESCRIPTION	PART NUMBER
1.....	8	SEAL.....	200133-00
2.....	2	BUSHING.....	205245-10
3.....	2	1/2-13 x 2 3/4" BOLT - GRADE 8.....	350098-50
4.....	16	M12 FLAT WASHER.....	350308-20
5.....	4	1/2" FLAT WASHER.....	350308-00
6.....	2	1/2" LOCK WASHER.....	350309-00
7.....	4	1/2-20 x 2 1/2" BOLT - GRADE 8.....	350704-50
8.....	4	1/2-20 NYLON INSERT LOCK NUT NUT - GRADE 8.....	350736-00
9.....	4	M8 FLAT WASHER.....	355700-00
10.....	8	M10 FLAT WASHER.....	355710-00
11.....	2	M12 LOCK WASHER.....	355725-00
12.....	2	M8 x 1.25 x 30mm BOLT.....	356001-50
13.....	4	M10 x 1.5 x 25mm BOLT.....	356109-10
14.....	2	M8 x 1.25 NYLON INSERT LOCK NUT.....	356208-50
15.....	4	3/18-16 NYLON INSERT LOCK NUT.....	356230-20
16.....	2	M12 x 1.5 x 80mm BOLT.....	357011-10
17.....	1	ANTI-SWAY BAR.....	580618-100
18.....	2	1" O.D. x 0.188" WALL x 1" SPACER.....	A000028
19.....	2	1" O.D. x 0.188" WALL x 1 1/8" SPACER.....	A002410
20.....	1	PLATE.....	B004124
21.....	1	DRIVER SIDE BRACKET.....	B1107
22.....	1	PASSENGER SIDE BRACKET.....	B1108
23.....	2	END LINK.....	B1109
24.....	2	BUSHING CLAMP.....	B142
25.....	2	1 1/4" X 1 1/2" THREADED BACKING PLATE W/ 6" ROD.....	C002077
26.....	1	LOCTITE.....	200544-00
27.....	1	AQUALUBE.....	400011-30

# INSTALLATION

The following instructions must be followed in the order listed to ensure a proper installation and to preserve the ROADMASTER warranty.

## 1. Remove the bump stop spacer.

This will allow clearance for the new sway bar. The bump stop spacer will not be replaced. Retain the four factory bolts for installation in the next step.

## 2. Install the side-specific brackets.

Locate the side-specific brackets, using the drawing on page 2 as a reference. Install the brackets as shown, using the existing bolts (Figure 1).

## 3. Install the skid plate.

Reference the drawing on page 2 before proceeding. Then, use the supplied 8mm hardware on the rearmost bottom mounts and 12mm hardware on the forwardmost bottom mounts. Then, use the upper mounts as templates to drill two 1/2" holes. Secure the skid plate using the 1/2" x 2 3/4" hardware, spacers and nutted backing plates (Figure 2).

## 4. Install the new sway bar.

Attach the sway bar to the skid plate and bolt it into place using the provided 1/2" x 2 3/4" hardware (Figure 3).

## 5. Grease the inside of the bushings.

Use the provided Aqualube to grease the inside of the bushings. After greasing, place the bushings over the new anti-sway bar.

## 6. Install the new bushing clamps.

Bolt them into place over the bar (Figure 3) and torque the bolts to 53 ft./lbs. (Figure 3).

*continued on next page*

Figure 1

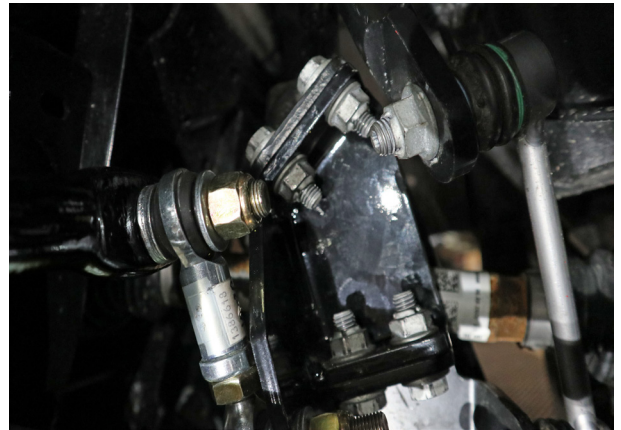


Figure 2

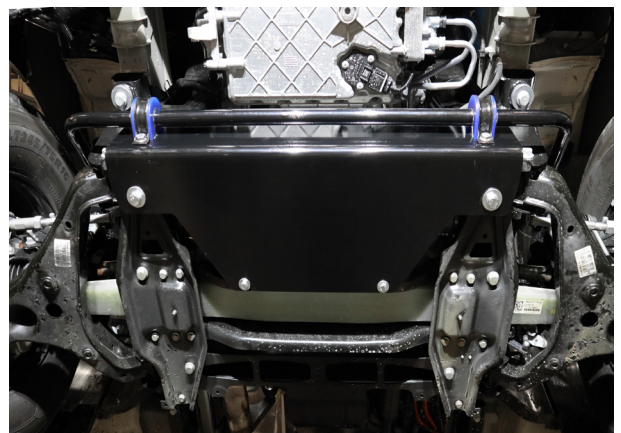


Figure 3



# INSTALLATION

Figure 4

## 7. Install the endlinks.

Use the drawing on page 2 to assemble the endlinks. Then, install them using the  $\frac{1}{2}$ " x  $2\frac{1}{2}$ " hardware (Figure 4).

**8. Test drive the vehicle. Listen for unusual noises. After the test drive, ensure all fasteners are properly tightened.**



## ⚠️ WARNING

After road testing, re-check all fasteners for proper tightness — if a fastener has worked loose or fallen off, re-tighten or replace it. Without all kit components properly tightened or in place, the anti-sway bar will not stabilize the vehicle at full capacity, which may cause reduced cornering ability or other reductions in vehicle handling or performance.

Failure to follow these instructions may result in property damage, personal injury or even death.

## ⚠️ WARNING

### **The anti-sway bar is not a load-bearing component**

Do not tow or hoist the vehicle using the anti-sway bar or its mounting brackets as attachment points. The anti-sway bar is not designed to carry the weight of the vehicle and may collapse, which will damage the anti-sway bar components, the suspension, or other components. The vehicle will detach or fall, which may cause severe personal injury.

Failure to follow these instructions may result in property damage, personal injury or even death.