

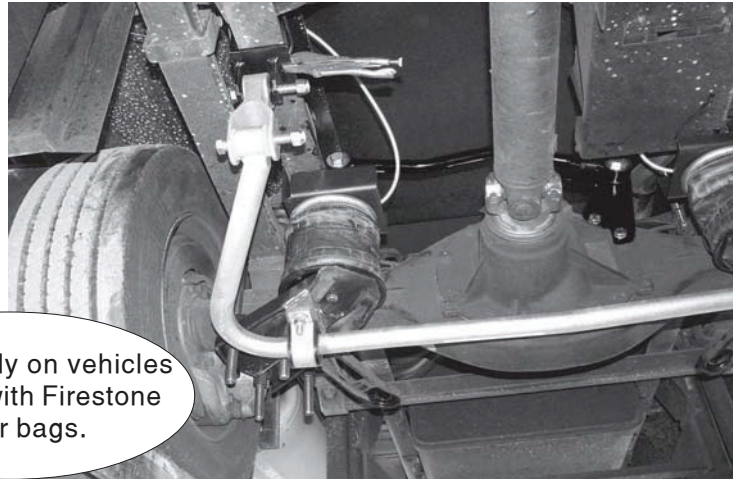


Installation Instructions

Adaptor Kit For Use With Firestone Ride Rite Air Bags Kit #2097

part #590054-00

kit for qualified installers only



For use only on vehicles equipped with Firestone Ride rite air bags.

INTRODUCTION

Thank you for purchasing this kit. This kit is designed to allow mounting of anti-sway bar kits when Firestone Ride Rite air bags are installed on the vehicle. The B406 bracket included with the anti-sway bar kit is not used in this installation; instead, the B608 and B609 will be welded to the bottom of the air bag axle bracket.

All the hardware needed for installation is included in this kit. Refer to the PARTS LIST in these instructions to identify the parts.

SUGGESTED TOOLS

The following tools are suggested to complete the installation procedures:

- GENERAL HAND TOOLS
- DRILL MOTOR AND BITS
- WELDING MACHINE

WARNING

- If raising the vehicle to install the anti-sway bar, always support the vehicle with jack stands at both frame rails or at the rear axle before working underneath. Ensure that the jack stands are securely positioned, and are rated at or above the weight of the vehicle.
- The installer must read the instructions and use all bolts and parts supplied. Use only the parts supplied by ROADMASTER to install this kit.
- Minor modifications are sometimes necessary due to slight vehicle variations, even for the same year, make and model.
- If running changes were made by the manufacturer after this kit was designed, there may be weldments, braces, gussets, or other structural items which interfere with the installation. It is the installer's responsibility to allow for these running changes without sacrificing the structural integrity of the anti-sway bar. Failure to securely fasten the anti-sway bar could result in property damage,

personal injury or even death.

- ROADMASTER will not be responsible for any damage or injury resulting from any modification or alteration.
- Check ALL the fasteners for tightness before and after road testing the vehicle.
- Do not use this document for custom fabrication, as it may not show all parts or structural components.
- Do not use an air impact wrench when re-installing bolts, as stripped threads may result.
- This anti-sway bar is only warranted for the original installation. Installing a used anti-sway bar on another vehicle is not recommended and will void the warranty.

WARNING

Failure to follow these instructions can result in property damage, personal injury or even death.

INSTALLATION

The following instructions must be followed in the order listed to ensure a proper installation and to preserve the ROADMASTER warranty.

WARNING

The anti-sway bar is heavy, and may cause property damage or personal injury if it falls on equipment, engine components or any part of your body. Ensure that the anti-sway bar is supported and that you are out of the way when removing the brackets.

Failure to follow these instructions may cause property damage, personal injury or even death.

1. Applications.

This supplemental kit is to be used only if the vehicle is equipped with Firestone Ride Rite air bags.

2. Clamping the brackets into place.

Position the anti-sway bar as it will be mounted to the vehicle upon the completed installation. Use jack stands and clamps to keep it in this position.

Refer to the installation instructions for the anti-sway bar kit to locate frame brackets B303 and B304. Clamp the two brackets into place.

3. Connecting the shackle links.

Connect the shackle links #B209 to the frame brackets using the supplied hardware.

4. Positioning of B608 and B609.

Connect the anti-sway bar to the shackle links and rotate the axle side of the anti-sway bar up and support with two jack stands. With the anti-sway bar in position, hold the B608 and B609 in position under the air bag axle plate to determine the correct location and tack weld into place (Figures 1-4).

5. Removal and reinstallation of axle plates.

Remove the air bag axle plates and weld. Reinstall the axle plates and finish installation of the anti-sway bar.

6. Completing the installation of the anti-sway bar.

Return to the anti-sway bar kit instructions to finish the installation of the anti-sway bar.

WARNING

The anti-sway bar is not a load-bearing component

Do not tow or hoist the vehicle using the anti-sway bar or its mounting brackets as attachment points. The anti-sway bar is not designed to carry the weight of the vehicle and may collapse, which will damage the sway bar components, the suspension, or other components. The vehicle will detach or fall, which may cause severe personal injury.

Failure to follow these instructions may result in property damage, personal injury or even death.

Figure 1

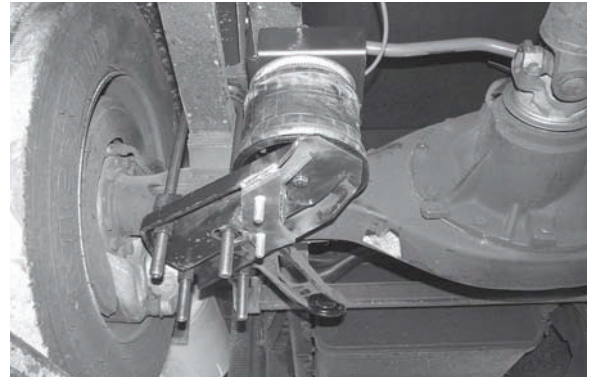


Figure 2

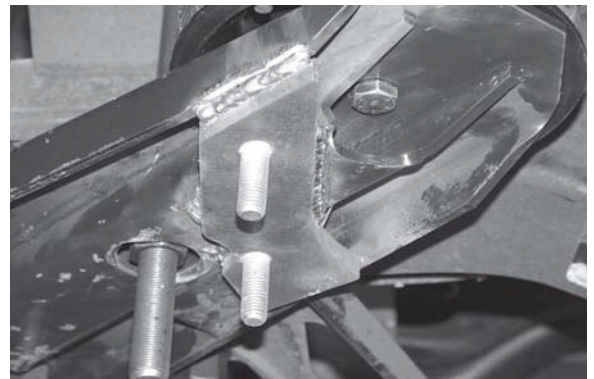


Figure 3

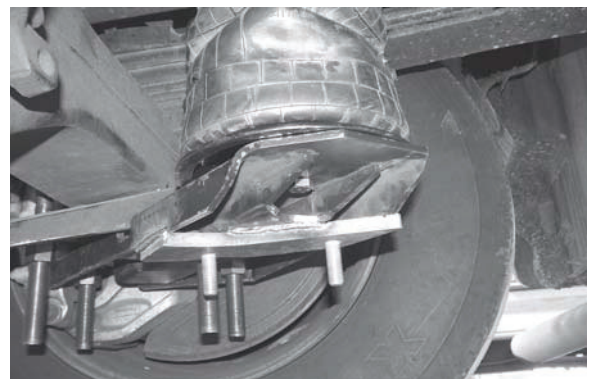


Figure 4

