

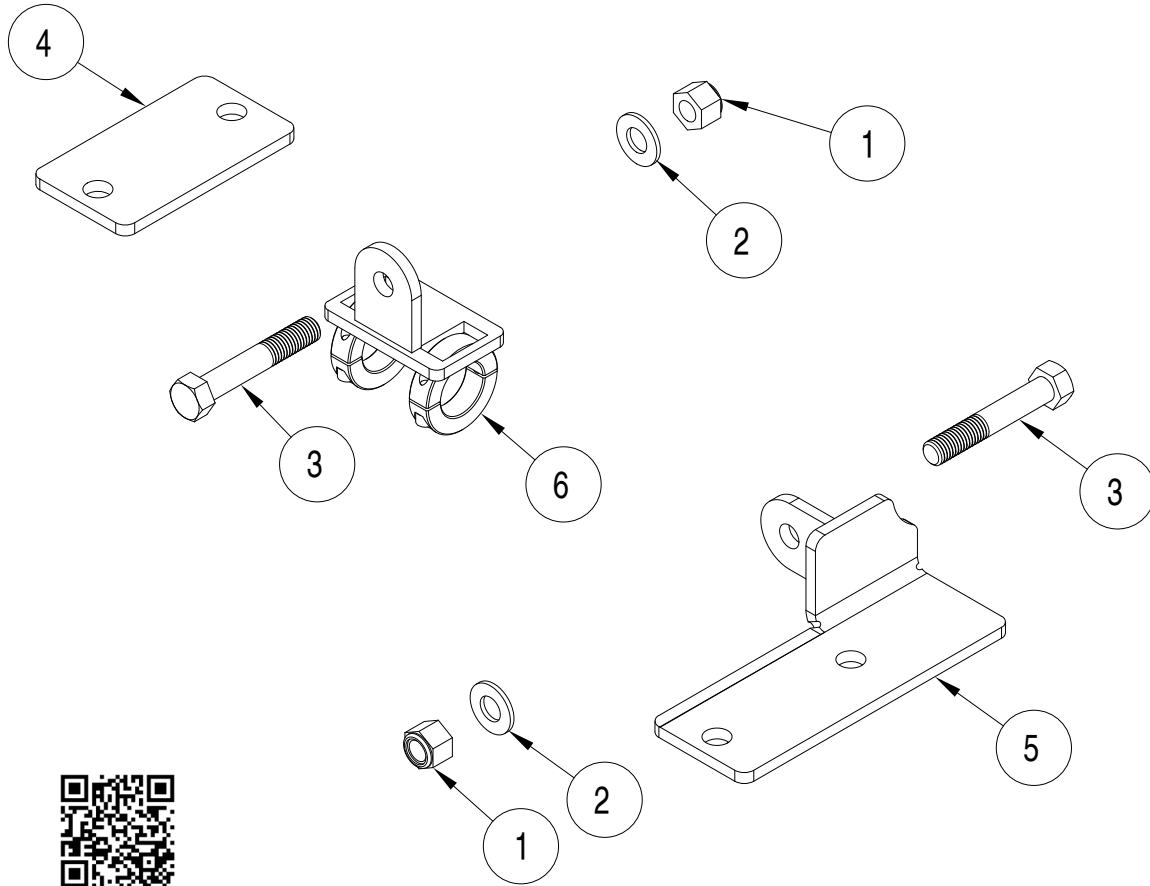


# EXACT CENTER BRACKET KIT INSTALLATION INSTRUCTIONS

**KIT# ECB5**

85-6350  
05-24

ROADMASTER, Inc. 6110 NE 127th Ave. Vancouver, WA 98682 360-896-0407 fax 360-735-9300 www.roadmasterinc.com



See what  
this fits

ITEM	QTY	DESCRIPTION	PART NUMBER
1	2	1/2-13 NYLON INSERT LOCK NUT	350259-00
2	2	1/2" SAE WASHER	350308-20
3	2	1/2-13 x 3" BOLT - GRADE 8 TIGHTEN TO 25 ft-lbs	350706-00
4	1	SPACER	A006499
5	1	FRAME BRACKET	C003656
6	1	TIRE ROD BRACKET, 1/4-28" SOCKET TIGHTEN TO 100 in-lbs	C003678
7	1	LOCTITE	200544-00



# EXACT CENTER BRACKET KIT INSTALLATION INSTRUCTIONS

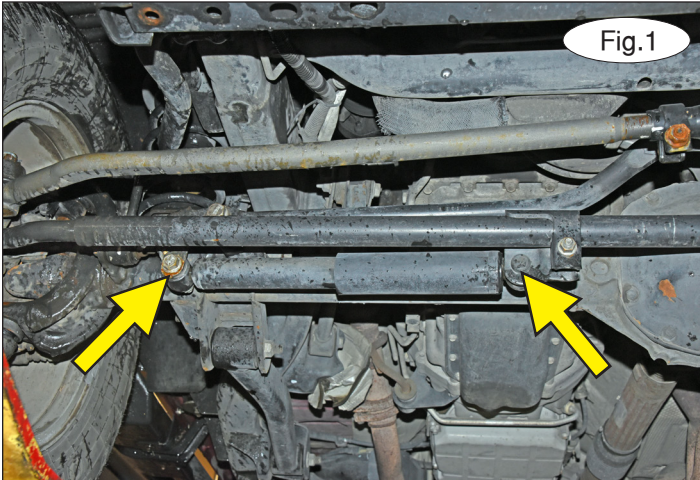
**KIT# ECB5**

85-6350  
05-24

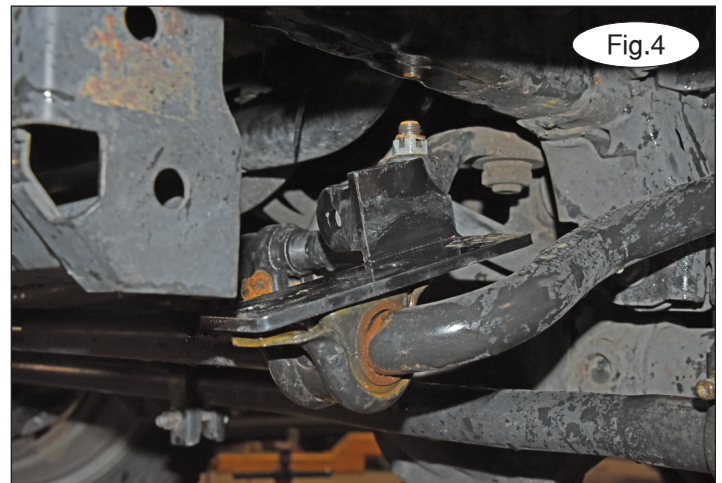
ROADMASTER, Inc. 6110 NE 127th Ave. Vancouver, WA 98682 360-896-0407 fax 360-735-9300 www.roadmasterinc.com

## IMPORTANT

Before installing the steering stabilizer, inspect the drag link and tie rod ends, as well as the steering components. If they are excessively worn and/or have excessive play, they will cause handling problems that the steering stabilizer will not fix. Replace worn components before installing the stabilizer to achieve the best results.



1. Make sure the wheels are in a straight-ahead position. Then, remove the nut attaching the driver's side of the factory steering dampener, and the nut and bolt on the passenger side bracket (Fig.1).
2. Remove the factory sway bar bolts from the bushing clamps (Fig.2). Then, carefully lower the sway bar down.



3. Install the included spacer plate on the passenger side sway bar mount (Fig.3) and install the new mounting bracket on the driver's side mount (Fig.4). Place Loctite on all of the factory bolts and reinstall them.
4. Loosely install the Y link bracket by placing the upper half with the plate on top of the Y link and the part with the collars on the under side. Leave the collars loose for now.



# EXACT CENTER BRACKET KIT INSTALLATION INSTRUCTIONS

KIT# ECB5

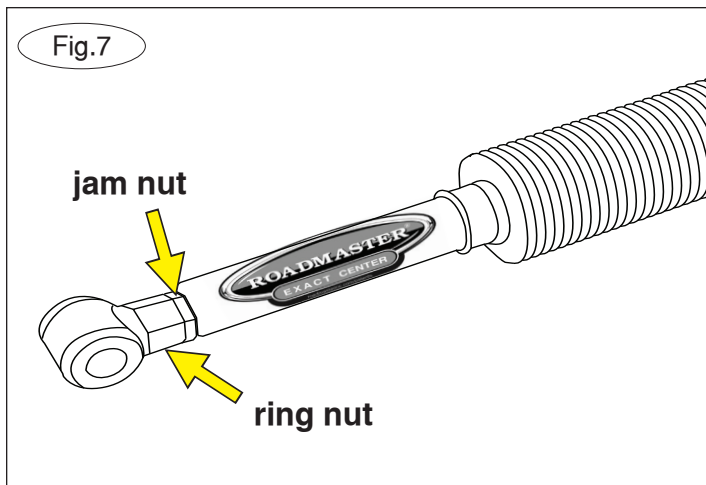
85-6350  
05-24

ROADMASTER, Inc. 6110 NE 127th Ave. Vancouver, WA 98682 360-896-0407 fax 360-735-9300 www.roadmasterinc.com



5. Loosely insert the Exact Center into the driver's side mounting bracket you installed in step 3 and then into the Y link bracket. *Note: Due to manufacturing variances, the decals may be situated on either the passenger side or the driver's side of the vehicle. This does not impact the product's functionality or how it is installed, as the unit is bi-directional.*

Place a ½" x 3" bolt through each mount and the frame and finish with a ½" flat washer (Fig.5 – driver's side, Fig.6 – passenger side). Now, tighten the bolts to 25 ft-lbs on each side. **Ensure that the dust boot is not twisted before proceeding to the next step.**



6. First, ensure that the suspension is loaded. Then, tighten the jam nuts against the ring nuts on each end. **Note: Hold the Exact Center unit in place so that it does not rotate when you tighten the jam nuts. Now, straighten the dust boot.** Test drive the vehicle and ensure that it is not pulling to the left or right. If it needs to be adjusted, follow step 7.

7. **IMPORTANT** Several micro-adjustments may be needed before the fit is dialed in. *Note: On older suspensions, more aggressive adjustments may be necessary. If the vehicle pulls to the right:* Loosen the passenger side jam nut. Rotate the Exact Center slightly **DOWNWARD**. *Note: If you align the flat faces of the ring nut and jam nut, that is 1/6th of a turn, for reference (Fig.7).* Then, tighten the jam nut while holding the Exact Center in place (Fig.8). Test drive once more. Repeat this process as many times as necessary to ensure that the unit functions as intended.

**If the vehicle pulls to the left:** Follow the directions above but on the driver's side and instead rotate the Exact Center **UPWARD**.

8. Straighten the dust boot as needed to ensure smooth operation of the unit. **This concludes the installation of the Exact Center.**



# EXACT CENTER BRACKET KIT INSTALLATION INSTRUCTIONS

**KIT# ECB5**

85-6350  
05-24

ROADMASTER, Inc. 6110 NE 127th Ave. Vancouver, WA 98682 360-896-0407 fax 360-735-9300 www.roadmasterinc.com

## **WARNING**

**Failure to follow these instructions can result in property damage, personal injury or even death.**

- Before beginning the installation, ensure that there are not existing steering issues with the vehicle. If there are, correct any deficiencies before installing the Exact Center.
- The installer must read the instructions and use all bolts and parts supplied with the installation kit. Failure to securely fasten the Exact Center could result in loss of the system, damage to the vehicle, personal injury or even death.
- There must be adequate clearance between the Exact Center, mounting kit and all chassis and steering parts or non-warranty damage to the vehicle and/or Exact Center will result. After final installation, recheck and adjust as needed to achieve adequate clearance. Failure to adjust the center positioning may result in loss of vehicular control.
- After installing the Exact Center, any technician performing alignment or suspension work must loosen the tie-rod bracket (if one was included in your vehicle's kit) to adjust the toe.
- Regardless of vehicle, a wide range of OEM or aftermarket options may or may not interfere with the installation. It is the installer's responsibility to make certain that equipment is not damaged once the suspension solution travels through its full range of motion. Failure to ensure adequate

clearance could result in non-warranty property damage, personal injury or even death.

- If running changes were made by the vehicle manufacturer after this kit was designed, some bolts or other fasteners in the included hardware pack may no longer be the correct size. It is the installer's responsibility to verify that the Exact Center is securely fastened to the vehicle, and fitted with the correct hardware, to account for these changes.
- Except to adjust for running changes to the vehicle, use only the parts supplied by ROADMASTER to install the Exact Center. Using standard grade parts or parts of the wrong size may result in loss of the system, damage to the vehicle, personal injury or even death.
- Once a year, the owner must inspect the fasteners for proper tightness.
- ROADMASTER does not recommend using an air impact wrench when reinstalling bolts, as stripped threads may result.
- This Exact Center is only warranted for the original installation. Installing a used Exact Center on another vehicle is not recommended and will void the warranty.

## **WARNING**

**Failure to follow these instructions can result in property damage, personal injury or even death.**