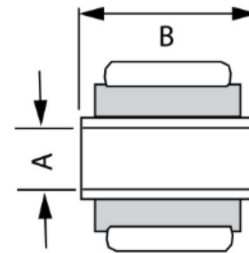


# Specifications — Shock Mount Codes

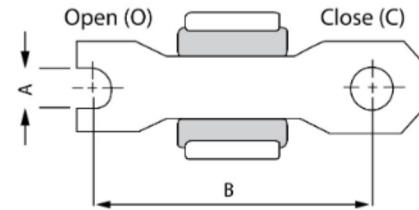
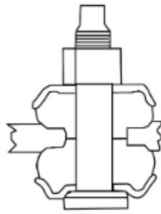
Mount Code	Sleeve ID (A)	Sleeve OAL (B)	Mount Code	Sleeve ID (A)	Sleeve OAL (B)	Mount Code	Sleeve ID (A)	Sleeve OAL (B)
LS1	10MM	15/16"	LS49	5/8"-16MM	1 3/16"	LS97	1/2"	2 3/4"
LS2	10MM	1"	LS50	5/8"-16MM	1 1/2"	LS98	5/8"-16MM	3"
LS3	10MM	1 1/4"	LS51	5/8"-16MM	1 9/16"	LS99	5/8"-16MM	3 1/4"
LS4	10MM	1 3/8"	LS52	5/8"-16MM	1 11/16"	LS100	1 1/8"	4"
LS5	10MM	1 7/16"	LS53	5/8"-16MM	2"	LS101	1 1/8"	2 5/8"
LS6	10MM	1 9/16"	LS54	3/4"	1 3/4"	LS102	7/8"	2 1/4"
LS7	10MM	1 5/8"	LS55	18MM	1 5/8"	LS103	1/2"	3 3/4"
LS8	10MM	2"	LS56	20MM	1 9/16"	LB1	1/2"	3/4"
LS9	10MM	2 1/8"	LS57	20MM	2"			
LS10	10MM	2 3/8"	LS58	20MM	2 7/16"			
LS11	10MM	3"	LS59	3/4"	3 13/16"			
LS12	7/16"	1 1/4"	LS60	3/4"	3 3/16"			
LS13	7/16"	1 5/16"	LS61	5/8"-16MM	4"			
LS14	7/16"	1 3/8"	LS62	5/8"-16MM	2 9/16"			
LS15	7/16"	1 7/16"	LS63	1/2"	1/2"			
LS16	7/16"	1 5/8"	LS64	21MM	1 15/16"			
LS17	7/16"	1 7/8"	LS65	1"	2"			
LS18	7/16"	2 1/8"	LS66	3/4"	1 3/8"			
LS19	7/16"	3 3/16"	LS67	3/4"	1 11/16"			
LS20	7/16"	3 3/8"	LS68	3/4"	1 7/8"			
LS21	12MM	1"	LS69	3/4"	1 15/16"			
LS22	12MM	1 1/8"	LS70	3/4"	2 1/4"			
LS23	12MM	1 1/4"	LS71	3/4"	2 3/4"			
LS24	12MM	1 3/8"	LS72	7/16"	2"			
LS25	12MM	1 7/16"	LS73	7/16"	2 1/2"			
LS26	12MM	1 1/2"	LS74	12MM	1 11/16"			
LS27	12MM	1 9/16"	LS75	20MM	1 3/4"			
LS28	12MM	1 5/8"	LS76	1/2"	2 3/8"			
LS29	12MM	1 3/4"	LS77	1/2"	2 7/16"			
LS30	12MM	1 7/8"	LS78	9/16"	1 1/2"			
LS31	12MM	2"	LS79	5/8"-16MM	1 3/8"			
LS32	12MM	2 1/8"	LS80	5/8"-16MM	1 3/4"			
LS33	12MM	2 5/16"	LS81	5/8"-16MM	1 7/8"			
LS34	12MM	2 7/8"	LS82	5/8"-16MM	1 1/2"			
LS35	1/2"	1 1/4"	LS83	18MM	2"			
LS36	1/2"	1 5/16"	LS84	12MM	2 3/8"			
LS37	1/2"	1 3/8"	LS85	5/8"-16MM	1 3/16"			
LS38	1/2"	1 1/2"	LS86	3/4"	2 5/16"			
LS39	1/2"	1 5/8"	LS87	5/8"-16MM	3 9/16"			
LS40	1/2"	1 11/16"	LS88	14MM	2 7/16"			
LS41	1/2"	2 1/4"	LS89	1"	1 3/4"			
LS42	14MM	1 5/16"	LS90	14MM	2 5/8"			
LS43	14MM	1 9/16"	LS91	14MM	1 3/4"			
LS44	14MM	1 7/8"	LS92	14MM	1 11/16"			
LS45	14MM	2 7/16"	LS93	18MM	3 1/4"			
LS46	14MM	3 1/8"	LS94	5/8"-16MM	2 3/4"			
LS47	9/16"	1 5/8"	LS95	20MM	2 3/8"			
LS48	9/16"	2 7/16"	LS96	1/2"	1 7/8"			



# Specifications – Shock Mount Codes

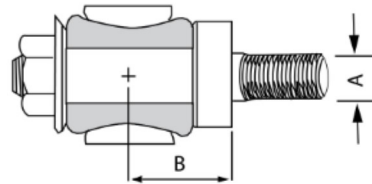
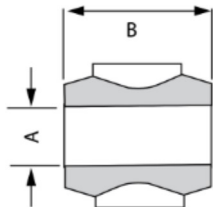
Stem Mount Code	Sleeve Length	Thread Pitch
S1	1 3/16"	M10
S12	1 3/16"	M10
S15	2 5/8"	M10
S2	2"	M12
S3	2"	3/8"-24
S33	2"	3/8"-24
S34	2 1/4"	3/8"-24
S4	2 3/8"	3/8"-16
S42	2 3/8"	3/8"-16
S5	2 5/8"	1/2"-13
S51	2 5/8"	1/2"-13
S52	2 5/8"	1/2"-20
S6	3 5/16"	5/8"-11
S61	3 5/16"	5/8"-11
S62	2 1/2"	5/8"-18
S7	1 1/8"	M8

Cross Pin Mount Code	X.Pin End Type	X.Pin Hole Diameter	X.Pin Length (Cntr to Cntr)
XP1	Open	5/16"	2 3/16"
XP2	Open	5/16"	2 3/8"
XP3	Open	5/16"	2 7/16"
XP4	Closed	5/16"	2 7/16"
XP5	Closed	5/16"	2 1/2"
XP6	Open	5/16"	2 3/4"
XP7	Closed	5/16"	2 7/8"
XP8	Open	5/16"	3"
XP9	Open	5/16"	3 5/8"
XP10	Open	3/8"	2 5/8"
XP11	Closed	3/8"	2 3/4"
XP12	Open	3/8"	3 3/16"
XP13	Closed	12MM	2 15/16"
XP14	Closed	1/2"	3 3/8"
XP15	Closed	1/2"	3 3/4"
XP16	Closed	3/8"	4"

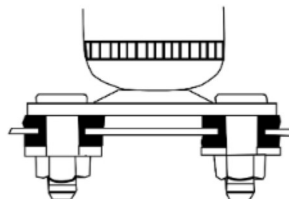


Loop Mount Code	Bushing ID (A)	Bushing OAL (B)
L1	5/8"	1 5/16"
L2	11/16"	1 9/16"
L3	3/4"	1 9/16"
L4	1"	1 3/4"
L5	1 1/4"	2 9/16"
L6	1/2"	3/4"

Cantilever Mount Code	Stud Diameter (A)	Stud Length (B)
CP1	1/2"	1 1/16"
CP2	1/2"	1 3/16"
CP3	1/2"	1 5/16"
CP4	1/2"	1 1/2"
CP5	5/8"	1 5/16"
CP5	5/8"	1 5/16"

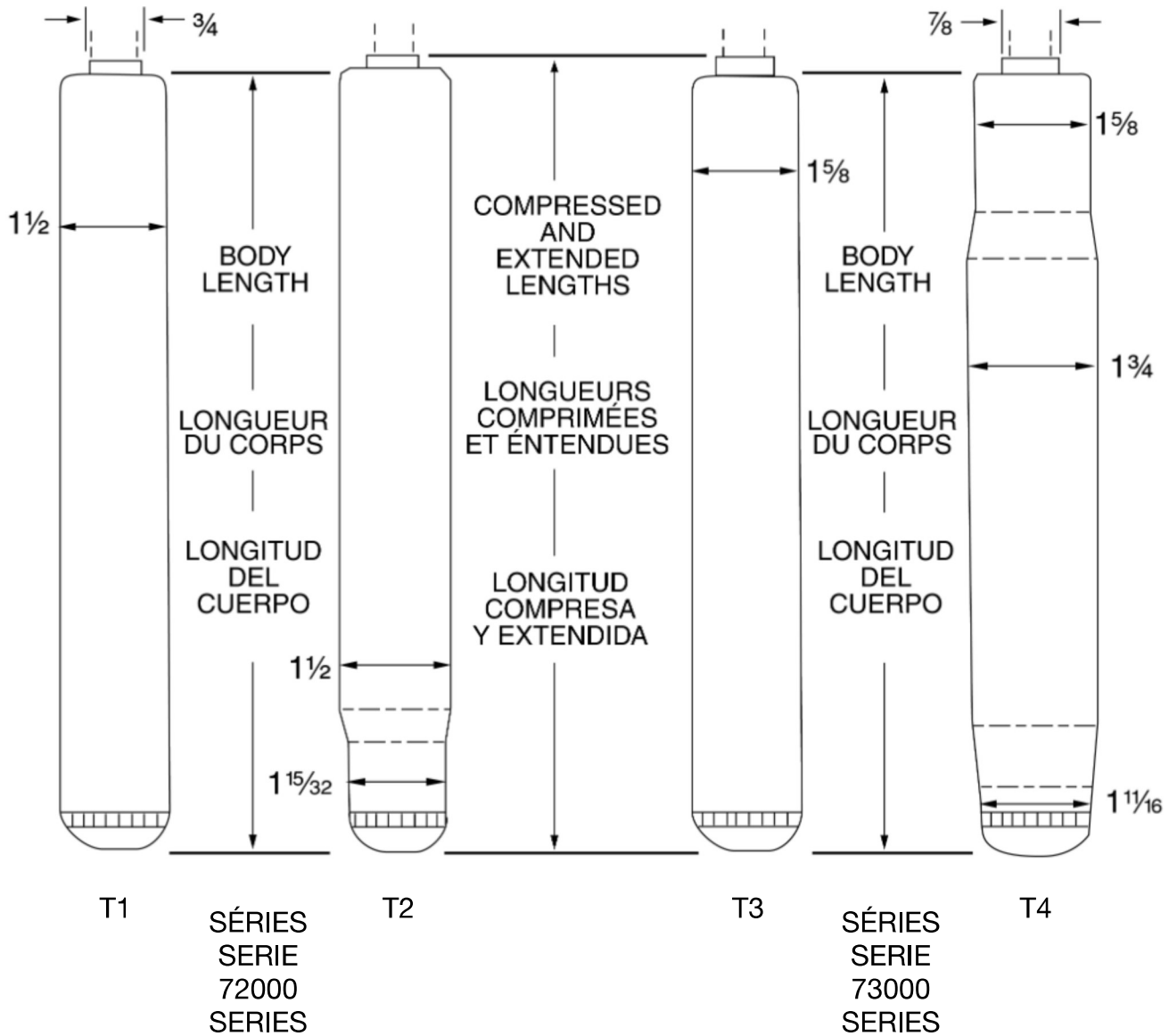


Special Mount	Mount Description
CLEV	Clevis Bracket Mount
SPEC	Special Mount
SP	Stud Plate Mount



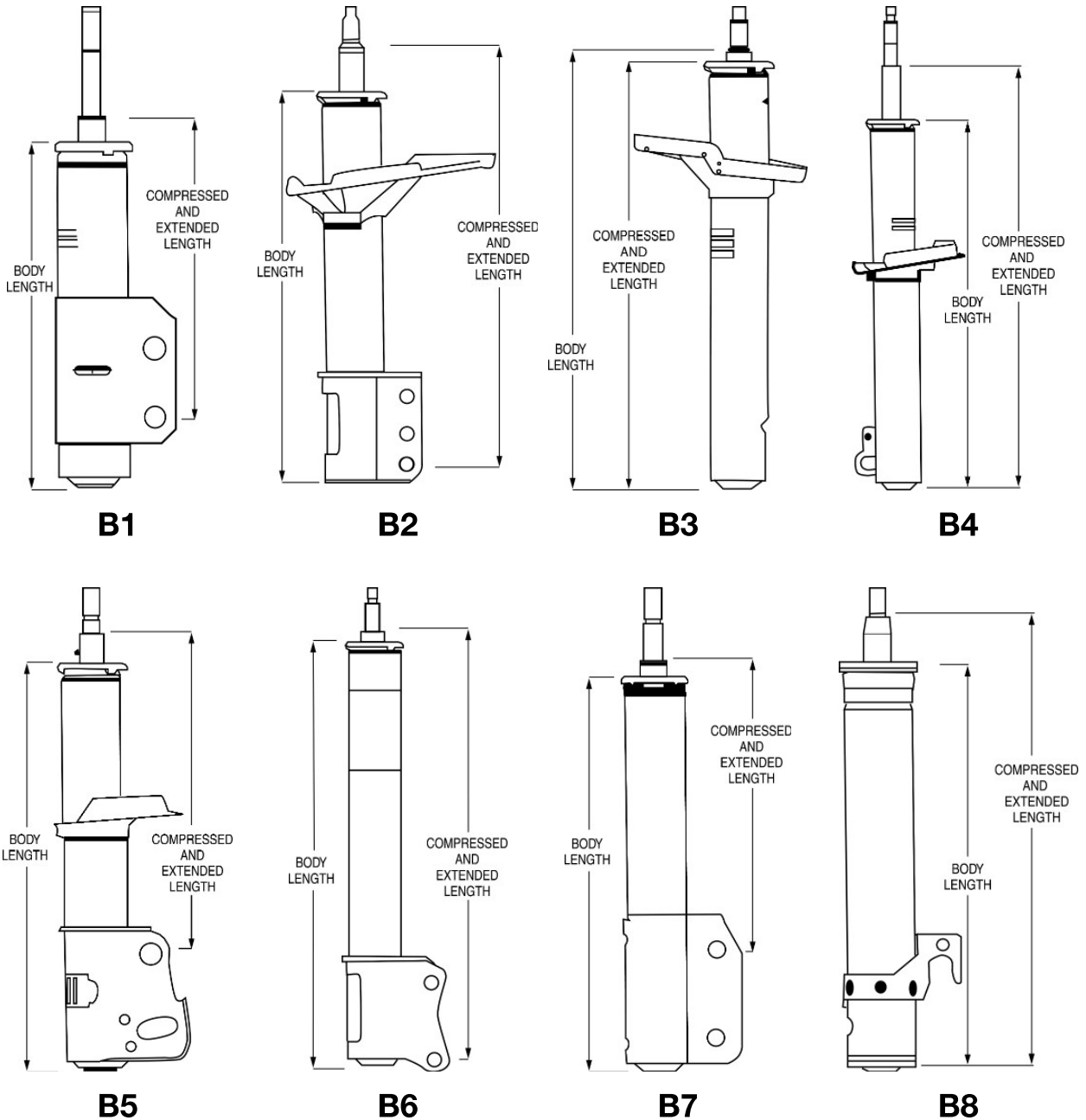
# Specifications

## REPLACEMENT CARTRIDGE DIMENSIONING DIMENSION DE LA CARTOUCHE DE REMPLACEMENT DIMENSIONES DEL CARTUCHO DE REPUESTO



Product specifications shown in this catalog are subject to change without notice.  
Les données techniques des produits de ce catalogue peuvent être modifiées sans préavis.  
Las especificaciones de los productos en este catálogo están sujetas a cambio sin previo aviso.

## MOUNTING & LENGTH CHARTS REPLACEMENT UNITS MONTAGE ET LONGUEUR DES UNITÉS DE REMPLACEMENT TABLAS DE MONTAJE Y LONGITUD DE LAS UNIDADES DE REPUESTO



BODY LENGTH / LONGUEUR DU CORP / LONGITUD DEL CUERPO.

COMPRESSED AND EXTENDED LENGTH / LONGUEUR COMPRIMÉE ET ÉTENDUE / LONGITUD COMPRIMIDA Y EXTENDIDA.

**NOTE/NOTA:**

All Piston Rod Ends are Designed Special For Each Application.

Chaque extrémité de tige de piston est conçue spécialement pour chaque application.

Todos los extremos de la varas del pistón están diseñadas especialmente para cada aplicación.