

MOUNTING INSTRUCTIONS

BILSTEIN

Before installing Bilstein shock absorbers, make sure the mountings on the vehicle chassis are in good condition.

Never modify, alter or damage the shock absorber tube or piston rod in any way — this action voids the warranty.

1. REMOVE EXISTING SHOCKS OR STRUTS.

For shocks: Remove existing shock from fittings. Check new shock's instructions. Some models require retention of stock bump stop, dust cover or protection tube.

For struts: Remove existing strut and spring. Remove and discard existing protection tube, dust cover and ring nut. Remove all inner parts and drain off oil.

2. INSERT NEW SHOCK OR STRUT. FOLLOW RECOMMENDED TORQUE SPECS.

Be sure to follow recommended torque settings on McPherson front suspension and all other mounting hardware.

3. SLIP BELLOWS DUST COVERS INTO PROPER POSITION.

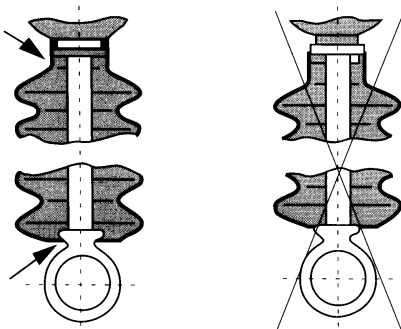
When installing bellows dust covers on shocks or struts, check to be sure the cover is properly in place at both ends.

On the seal end, slip the cover completely over the bead, as shown.

On the other end, completely cover both lugs on the hook, as shown.

RIGHT

WRONG



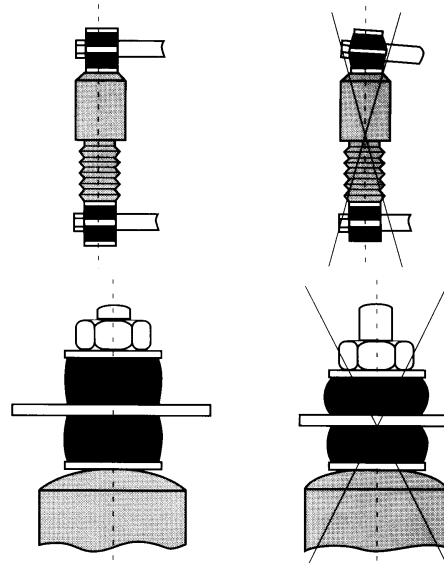
4. TIGHTEN RUBBER BUFFERS CORRECTLY.

When tightening the rubber buffers, be sure to make use of the stops provided.

With spacer sleeves, tighten the buffers to the point where the plate makes contact with the sleeve, or tighten until the nut is at the end of the threads, as shown.

RIGHT

WRONG



DO NOT REMOVE SLIGHT FILM OF OIL ON SEAL.

Don't be alarmed, or attempt to remove, the slight film of oil around the seal. Its presence is intentionally designed to help lubricate the piston rod.

